

SEIKO

QUARTZ *LC*

(Cal. 0662A)

PARTS LIST

Calibre No.

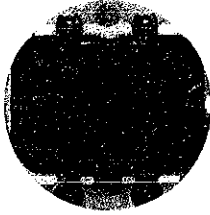
0662A

Jewels

0j

Style Name

QUARTZ LC



Characteristics

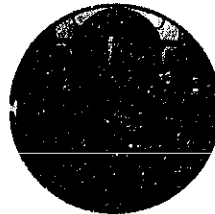
Casing diameter : 27.0 ϕ mm
 Maximum height : 8.50 mm
 Frequency of quartz crystal oscillator : 32,768 Hz
 (Hz=Hertz Cycle per second)
 Time display : Consecutive and accumulative digits indication in hours, minutes and seconds using Single Crystal Display (Nematic Liquid Crystal, FE-type)
 Time adjusting method :
 Hour, minute and second digits can be selected and adjusted instantly by depressing the front touch-buttons.
 Second digits fly back to 0 digit by the first depressing.
 Time micro-adjustor : Trimmer condenser system
 Side button : Designed with locking device for time adjusting finish.
 Illumination light for digital display panel :
 Illuminated in coordination with the touch-button depressing.



383 649



782 643



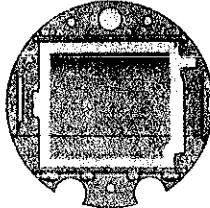
4001 667



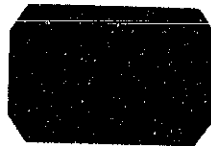
4245 649



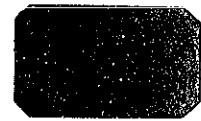
4398 649



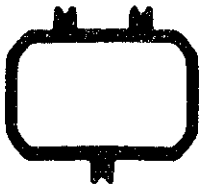
4408 652



4501 680



4521 680



4540 644



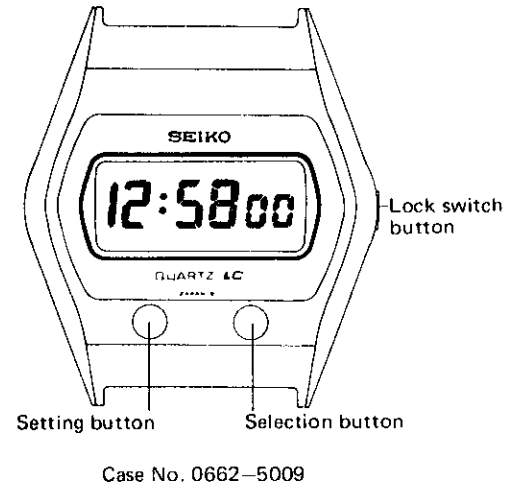
U.C.C.386

Calibre No. 0662A		Jewels 0j	Style Name QUARTZ LC	
PART NO.	PART NAME	PART NO.	PART NAME	
383 649	Setting lever			
782 643	Setting lever spring			
4001 667	Circuit block			
4245 649	Setting switch spring			
4398 649	Battery guard			
4408 652	Frame for liquid crystal panel			
4501 680	Liquid crystal panel			
4521 680	Reflecting mirror			
4540 644	Spring for liquid crystal panel			
U.C.C.386	Silver oxide battery			

TECHNICAL GUIDE SHEET

SEIKO DIGITAL QUARTZ LC Cal. 0662A

The SEIKO Digital Quartz LC Cal. 0662A is a popular type digital watch which inherited the fundamental construction and function of Cal. 0624A, which has already been placed on the overseas market and gained a reputation for high reliance.



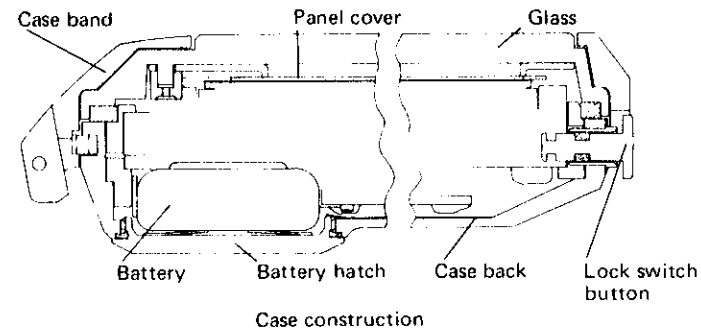
Specification and Operation:

The specifications and operation are the same as that for Cal. 0624A, but some of the movement parts are different from those of Cal. 0624A in shape.

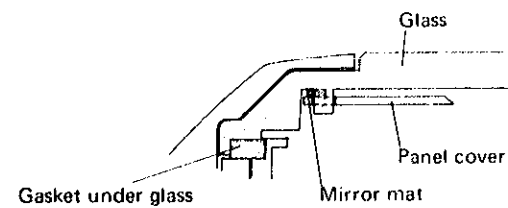
They are the liquid crystal panel, the spring for the liquid crystal panel, the frame for the liquid crystal panel, the setting lever spring, and the circuit block.

Furthermore, the case construction is newly designed to make the panel cover one component with glass, as shown in the illustration, which facilitates disassemble and reassemble.

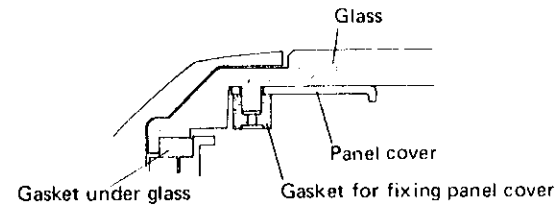
As for repair service, refer to the checking and adjustment section of the Technical Guide book for Cal. 0624A already issued.



Two Types of the Panel and Glass Component:



The panel cover is fixed with a mirror mat which is fixed to the glass.



The panel cover is fixed with a gasket for fixing panel cover to the glass.

Remarks: Do not disassemble these components in normal disassembling and reassembling.