
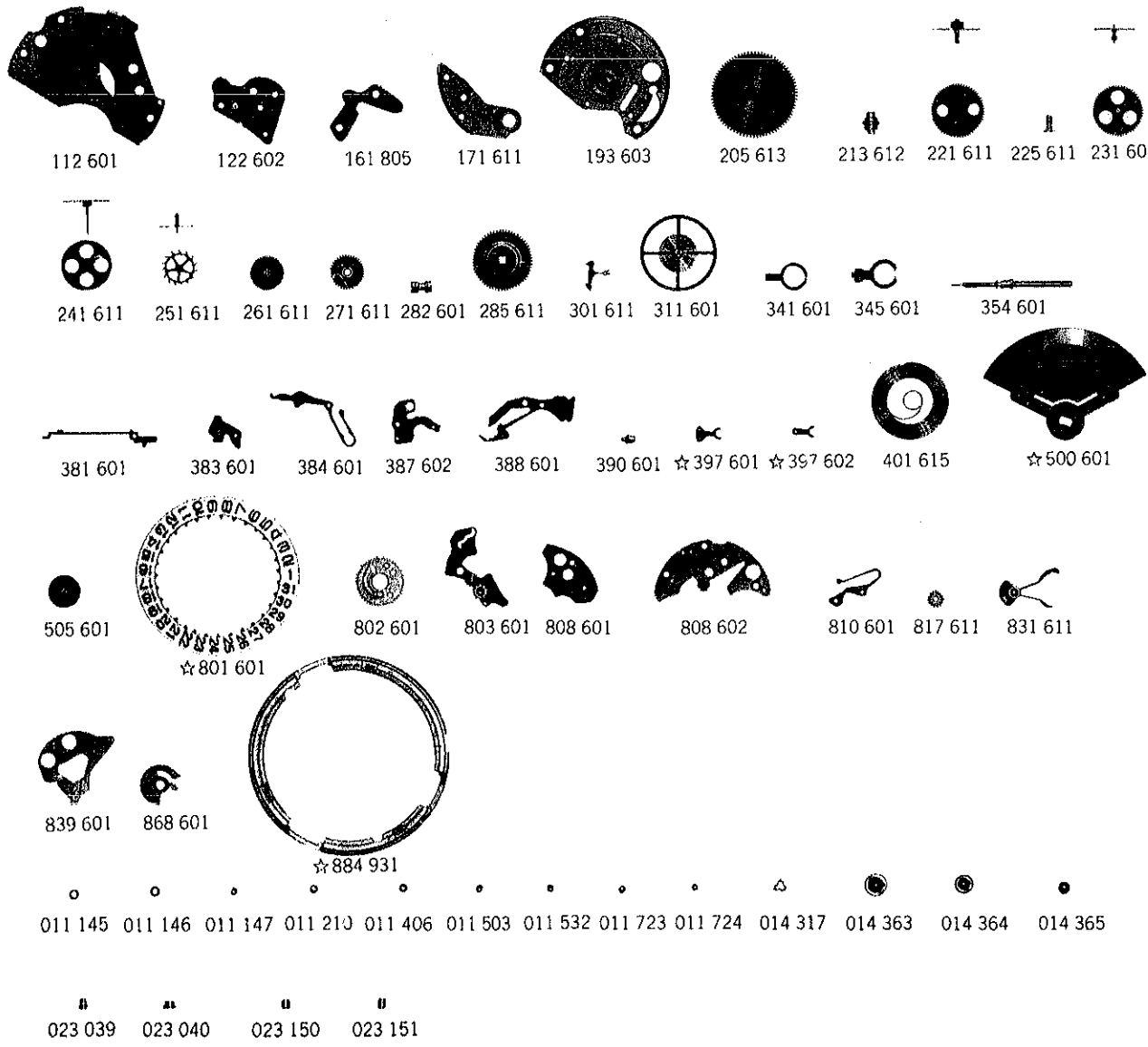


Cal. 6308A



Characteristics

Casing diameter : 27.0 φmm
 Maximum height : 5.2 mm
 Vibrations per hour : 21,600
 Automatic winding with sweep second
 Calendar (date)
 Instant date setting
 "Diashock" Shock Resistant Device



112 601 122 602 161 805 171 611 193 603 205 613 213 612 221 611 225 611 231 601
 241 611 251 611 261 611 271 611 282 601 285 611 301 611 311 601 341 601 345 601 354 601
 381 601 383 601 384 601 387 602 388 601 390 601 ☆397 601 ☆397 602 401 615 ☆500 601
 505 601 ☆801 601 802 601 803 601 808 601 808 602 810 601 817 611 831 611
 839 601 868 601 ☆884 931
 011 145 011 146 011 147 011 210 011 406 011 503 011 532 011 723 011 724 014 317 014 363 014 364 014 365
 023 039 023 040 023 150 023 151

T
022 257

T
022 458

T
022 467

T
022 468

T
022 491

T
022 493

T
022 760

T
022 761

T
022 160

Catalog No.

Calibre No. 6308A		Jewels 17j	Style Name	
⇒ Basic Calibre 6309A 17J Catalog No. 63-09-1				
PART NO.	PART NAME	PART NO.	PART NAME	
112 601	Barrel & train-wheel bridge	022 257	Setting lever spring screw	
122 602	Center wheel bridge	022 458	Screw for oscillating weight	
161 805	Pallet cock	022 467	Ratchet wheel screw	
171 611	Balance cock	022 468	Pallet cock screw	
193 603	Framework for automatic device with ball-bearing	022 468	Framework screw for automatic device with ball-bearing	
205 613	Complete barrel with arbor	022 468	Date driving wheel screw	
213 612	Barrel arbor	022 491	Minute wheel bridge screw	
221 611	Center wheel & pinion	022 493	Barrel & train wheel bridge screw	
225 611	Cannon pinion	022 493	Balance cock screw	
231 601	Third wheel & pinion	022 760	Date dial guard screw	
241 611	Fourth wheel & pinion	022 761	Dial screw	
251 611	Escape wheel & pinion	022 160	Stud screw	
261 611	Minute wheel	023 039	Tube for framework screw of automatic device	
271 611	Hour wheel	023 040	Tube for pallet cock screw (recessed type)	
282 601	Clutch wheel	023 150	Tube for pallet cock screw (cylinder type)	
285 611	Ratchet wheel	023 151	Tube for barrel & train wheel bridge screw	
301 611	Jewelled pallet fork & staff			
311 601	Balance complete			
341 601	Regulator			
345 601	Stud holder			
354 601	Winding stem			
381 601	Click			
383 601	Setting lever			
384 601	Yoke (Clutch lever)			
387 602	Minute wheel bridge			
388 601	Setting lever spring			
390 601	Setting lever axle			
☆397 601	Lever for unlocking stem A			
☆397 602	Lever for unlocking stem B			
401 615	Mainspring with slipping attachment			
☆500 601	Oscillating weight			
505 601	Transmission wheel			
☆801 601	Date dial			
802 601	Date driving wheel			
803 601	Setting wheel lever complete			
808 601	Date dial guard A			
808 602	Date dial guard B			
810 601	Date jumper			
817 611	Intermediate date wheel			
831 611	Pawl lever with jewel			
839 601	Holder for transmission wheel & pawl lever			
868 601	Date driving wheel holder			
☆884 931	Holding ring for dial			
011 145	Upper hole jewel for center wheel			
011 146	Lower hole jewel for center wheel			
011 147	Upper hole jewel for transmission wheel			
011 210	Diashock cap jewel			
011 406	Upper hole jewel for escape wheel			
011 406	Lower hole jewel for escape wheel			
011 503	Upper hole jewel for pallet			
011 532	Lower hole jewel for third wheel			
011 723	Lower hole jewel for pallet			
011 724	Lower hole jewel for transmission wheel			
014 317	Diashock spring			
014 363	Diashock upper frame			
014 364	Diashock lower frame			
014 365	Diashock hole jewel with frame			
022 257	Center wheel bridge screw			

☆⇒ Please see remarks.

☆⇒ Please see remarks on the next page.

Calibre No. **6308A**

Jewels
17j

Style Name

⇒ Basic Calibre 6309A 17J Catalog No. 63-09-1

Remarks :

Lever for unlocking stem

- ☆397 601.....Used for the one-piece type case with the dial whose external diameter is **27mm** or longer.
(When the dial is shaped other than round, the radius is to be measured in the direction of the lever for unlocking stem.)
- ☆397 602.....Used for the one-piece type case with the dial whose external diameter is less than **27mm**.
(When the dial is shaped other than round, the radius is to be measured in the direction of the lever for unlocking stem.)

Date dial

- ☆801 601 (Black figures on white background).....Used when both the crown and the calendar frame are located at **3** o'clock position.

If in any other type of date dial is required, specify ① Cal. No. ② the crown position ③ the calendar frame position and ④ the dial No.

Holding ring for dial

- ☆884 931.....The type of a holding ring for dial is determined based on the design of cases and dials. Check the case number and refer to "**SEIKO Casing Parts List**" to choose a corresponding holding ring for dial.

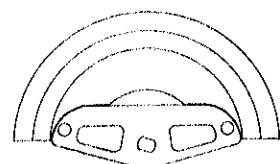
Oscillating weight

- ☆500 601.....This oscillating weight is interchangeable with the one for movements of calibre 61 series listed below, and the interchangeability is limited within the listed calibres.

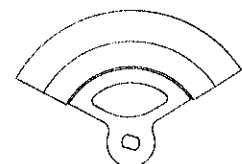
Oscillating weight Cal. No.	500 620	500 622	500 601
6105 A & B			
6106 B & C			
6117 A & B	V	V	V
6118A			
6119 B & C			
6109A	V	V	V
63 Series	—	—	V

V : Interchangeable
— : Not interchangeable

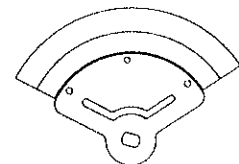
Form of oscillating weight



500 620



500 622



500 601