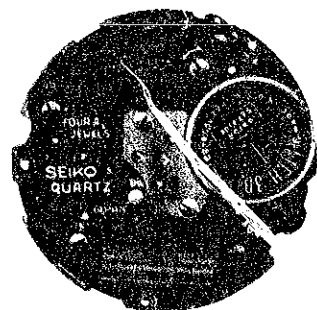
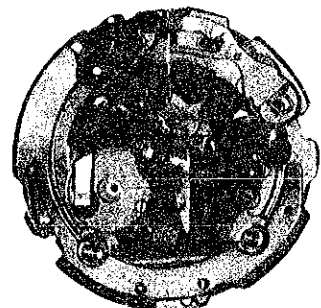


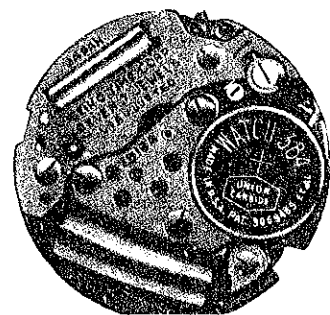
# TECHNICAL GUIDE

## SEIKO QUARTZ

CAL. 7518A



CAL. 7918A



### CONTENTS

#### CAL. 7518A

I. SPECIFICATIONS AND FEATURES .....	1
1. Specifications .....	1
2. Features .....	1
3. Parts different from Cal. 7546A's and new parts .....	2
II. DISASSEMBLING, REASSEMBLING AND LUBRICATING OF THE DIAL AND THE SETTING MECHANISM .....	3

\* Refer to the Technical Guide of Cal. 7546A for other repairing procedures.

#### CAL. 7918A

I. SPECIFICATIONS AND FEATURES .....	4
1. Specifications .....	4
2. Features .....	4
3. Parts different from Cal. 7903A's and new parts .....	5
II. DISASSEMBLING, REASSEMBLING AND LUBRICATING .....	5
1. How to handle the case .....	5
2. How to disassemble, reassemble and lubricate the dial side .....	5

\* Refer to the Technical Guide of Cal. 7903A for other repairing procedures.

1. Specifications (compared with Cal. 7546A)

Item		Cal. No.	7518A	7546A
Time indication			2 hands	3 hands
Additional mechanism	Date		--	○
	Day of the week		--	○
	Bilingual changeover system for the day of the week		--	○
	Instant day and date setting		--	○
	Electronic circuit reset switch		○	○
	Second setting device (stops at every second)		--	○
	Battery life indicator		--	○
Crystal oscillator			32,768 Hz (Hz = Hertz . . . Cycles per second)	
Loss/gain			Loss/gain at normal temperature range Monthly rate: less than 15 seconds (Annual rate: less than 3 minutes)	
Outside diameter			φ27.4 mm	
Casing diameter			φ27.0 mm	
Height			4.5 mm	4.6 mm
Operational temperature range			-10°C ~ +60°C (14°F ~ 140°F)	
Driving system			Step motor system (2 poles)	
Regulation system			Trimmer condenser	
Battery			U.C.C. 301, Maxell SR43SW or SONY EVEREADY 301 Battery life is approximately 5 years. Voltage: 1.55V	
Jewels			4 jewels	

2. Features

Cal. 7518A is the analogue quartz watch specially designed for the visually handicapped, which has no need of winding and ensures a high reliability for a long period of time.

### 3. Parts different from Cal. 7546A's and new parts

\* See Parts Catalog for details.

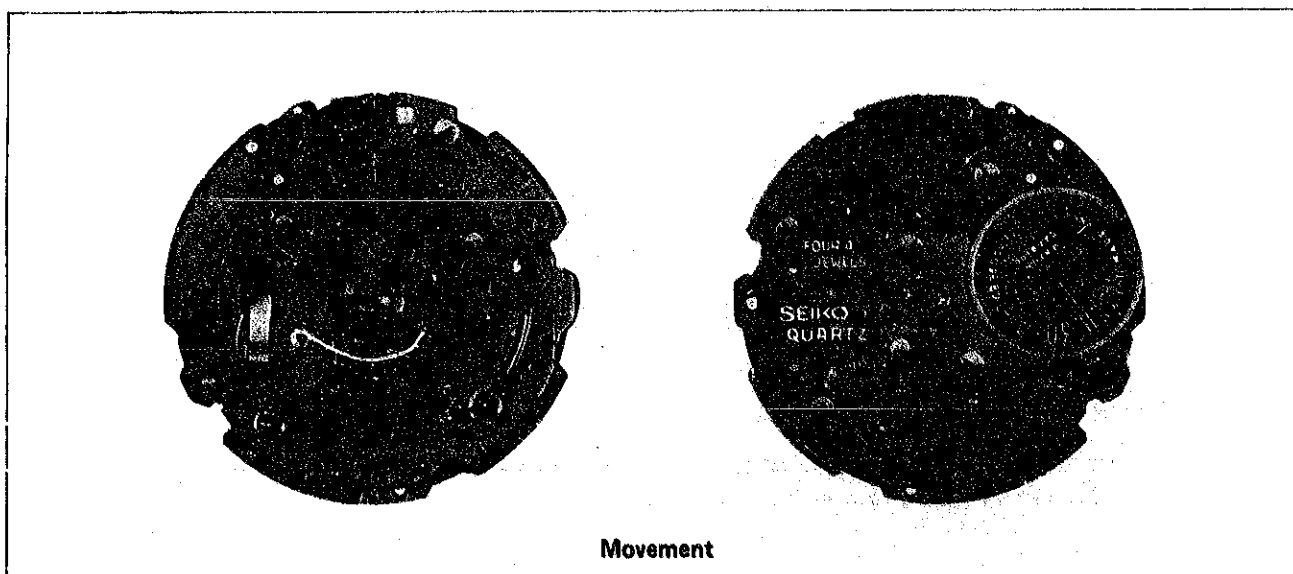
(1) The parts listed below are changed. (Cal. 7518A is not provided with the calendar function.)

PARTS NAME	PARTS NO.	PARTS NAME	PARTS NO.
Circuit bridge plate	4050 747	Setting wheel lever complete	803 755
Cannon pinion	225 755	Coil block	4002 751
Fourth wheel and pinion	241 755		
Hour wheel	271 755		
Setting lever spring	388 755		
Clutch wheel	282 755		
Minute wheel bridge	387 602		

(2) New parts

PARTS NAME	PARTS NO.	PARTS NAME	PARTS NO.
Dial washer	491 610	Screw for setting wheel lever guard	022 760
Friction spring for cannon pinion	550 805	Case screw	022 421
Setting wheel lever guard A	808 601		
Setting wheel lever guard B	548 750		
Minute hand screw	022 465		

Parts except (1) and (2) are the same as those of Cal. 7546A.



## II. DISASSEMBLING, REASSEMBLING AND LUBRICATING OF THE DIAL AND THE SETTING MECHANISM

\* Refer to the Technical Guide of Cal. 7546A for other repairing procedures.

### Remarks for disassembling the winding stem

- Be sure to pull out the winding stem with the crown pulled out to the first click. If it is pulled out with the crown at the normal position, later it will be impossible to reassemble the winding stem.

### Types of oil

- Moebius A
- SEIKO Watch Oil S-6

Pliers

Vinyl sheet for preventing scratching the dial

12 o'clock

12 o'clock

#### How to handle the hands

- How to disassemble the hour and minute hands
  - When removing the minute hand screw, be sure to hold the minute hand lightly with fingers so that it may not move and loosen it.
  - The hour hand is set rather tightly. (Be careful not to scratch the dial and pry up the hour hand gradually with pliers.)
- How to reassemble the hour and minute hands
  - Reassemble the hour hand  
Place the edges of the cannon pinion into which the minute hand is reassembled in line with the 12 and 6 o'clock positions as shown in the illustration on the left and push the hour hand in at the 12 o'clock position.
  - Set the hand  
To get the minute hand and the hour hand set correctly, once get back the hour hand counterclockwise and then turn it again in the clockwise direction to set it at the 12 o'clock position.
  - Reassemble the minute hand  
Push the minute hand in at the 12 o'clock position so that its position may not shift from that of the hour hand.

**Note:** Before tightening the screw, be sure that the edges of the cannon pinion agree with those of the minute hand.

Be sure to set the friction spring for cannon pinion and the dial washer respectively as shown in the illustration.

Correct

Incorrect

Dial washer

Friction spring for cannon pinion

- ① Minute hand screw
- ② Minute and hour hands
- ④ Dial
- ⑤ Holding ring for dial
- ⑥ Screw for setting wheel lever guard A
- ⑦ Setting wheel lever guard A
- ⑧ Screw for setting wheel lever guard B
- ⑨ Setting wheel lever guard B
- ⑩ Minute wheel bridge screw
- ⑪ Minute wheel bridge
- ⑫ Minute wheel
- ⑬ Dial washer
- ⑭ Hour wheel
- ⑮ Setting wheel lever complete
- ⑯ Friction spring for cannon pinion
- ⑰ Cannon pinion
- ③ Dial screw (2 pcs.)

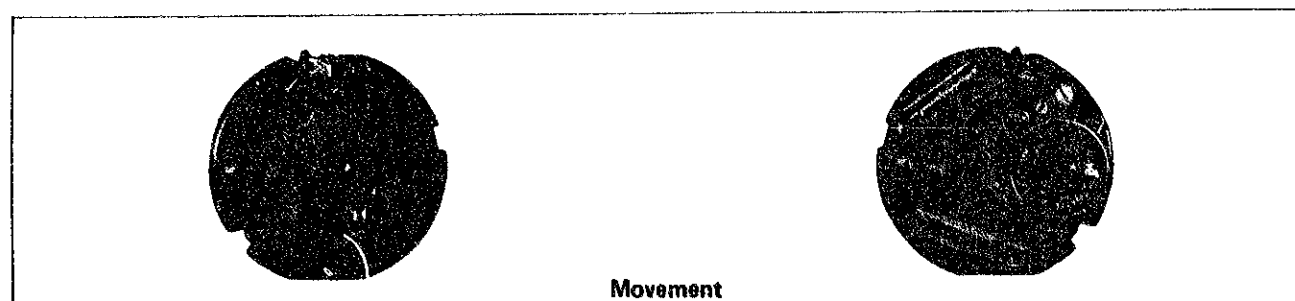
Fit the groove of the setting wheel lever complete to the setting lever axle as shown in the illustration below.

1. Specifications (compared with Cal. 7903A)

Item		Cal. No.	7918A	7903A
Time indication			2 hands	3 hands
Additional mechanism	Date		—	○
	Day of the week		—	○
	Bilingual changeover system for the day of the week		—	○
	Electronic circuit reset switch		○	○
	Second setting device (stops at every second)		—	○
Battery life indicator		—	○	
Crystal oscillator	32,768 Hz (Hz = Hertz . . . Cycles per second)			
Loss/gain	Loss/gain at normal temperature range Monthly rate: less than 20 seconds (Annual rate: less than 4 minutes)	Loss/gain at normal temperature range Monthly rate: less than 15 seconds (Annual rate: less than 3 minutes)		
Casing diameter	φ18.0 mm			
Height	3.6 mm without battery	4.0 mm without battery		
Operational temperature range	-10°C ~ +60°C (14°F ~ 140°F)			
Driving system	Step motor system (2 poles)			
Regulation system	Trimmer condenser			
Battery	U.C.C. 384, Maxell SR41SW, SEIKO TR41SW or SB-D1, SONY EVEREADY 384 Battery life is approximately 2 years. Voltage: 1.55 V			
Jewels	7 jewels			

2. Features

- Cal. 7918A is the analogue quartz watch specially designed for the visually handicapped, which has no need of winding and ensures a high reliability for a long period of time.
- Further miniaturized and made thinner, it has an artistic design of oval form for ladies.



3. Parts different from Cal. 7903A's and new parts

\* See Parts Catalog for details.

(1) The parts listed below are changed. (Cal. 7918A is not provided with the calendar function.)

PARTS NAME	PARTS NO.	
Third wheel bridge (the mark alone changed)	131	793
Cannon pinion	225	792
Fourth wheel and pinion	241	792
Minute wheel	261	792
Hour wheel	271	792
Setting lever spring	388	799
Setting wheel lever complete	803	799

(2) New parts

PARTS NAME	PARTS NO.	
Casing clamp	399	770
Dial washer	491	610
Casing clamp screw	022	423
Minute hand screw	022	465

II. DISASSEMBLING, REASSEMBLING AND LUBRICATING

1. How to handle the case

Refer to the "79 SERIES [Z]" of "SEIKO WATCH CASING GUIDE".

2. How to disassemble, reassemble and lubricate the dial side

- Refer to the "Technical Guide of Cal. 7903A" for other disassembling, reassembling, lubricating, and checking and adjustment.
- Lubricating  
Be sure to lubricate according to the marks as shown in the diagram.

Types of oil	Oil quantity
Moebius A	Normal quantity
SEIKO Watch Oil S-6	Extremely small

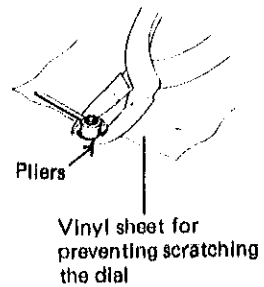
Disassembling and reassembling of the dial side

① Minute hand screw

② Hour and minute hands

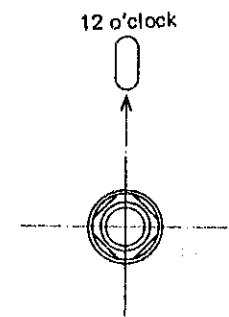
Remarks for disassembling and reassembling

1. How to disassemble the hour and minute hands
  - When removing the minute hand screw, be sure to hold the minute hand lightly with fingers so that it may not move and loosen the screw.
  - The hour hand is set rather tightly. (Be careful not to scratch the dial and pry up the hour hand gradually with pliers.)

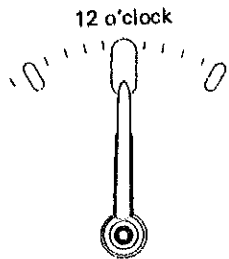


2. How to reassemble the hour and minute hands

- (1) Reassemble the hour hand  
Place the edges of the cannon pinion into which the minute hand is reassembled in line with the 12 and 6 o'clock positions as shown in the illustration on the left and push the hour hand in at the 12 o'clock position.



- (2) Set the hands  
To get the minute hand and the hour hand set correctly, once get back the hour hand counter-clockwise and turn it again in the clockwise direction to set it at the 12 o'clock position.



- (3) Reassemble the minute hand  
Push the minute hand in at the 12 o'clock position so that its position may not shift from that of the hour hand.

**Note:** Before tightening the screw, be sure that the edges of the cannon pinion agree with those of the minute hand.

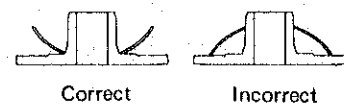
④ Dial

⑤ Holding ring for dial

⑥ Dial washer

Remarks for reassembling

Be careful not to mistake the top and bottom.



⑦ Hour wheel

⑧ Cannon pinion

③ Dial screw (2 pcs.)

All procedures of Disassembling, Reassembling, Checking and Adjustment are completed.